

# Community Programs Report

## Behavioral Health Program Breakout

July 1, 2024 to December 31, 2024



**FlaglerCares**  
Helping People. Transforming Communities. Changing Lives.

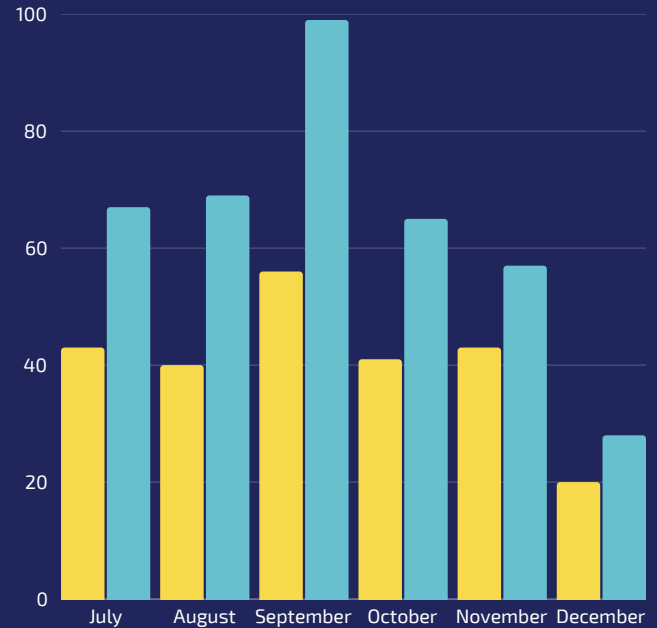
# 222

Unduplicated  
Individuals  
Requested  
Assistance with a  
Behavioral Health  
Need

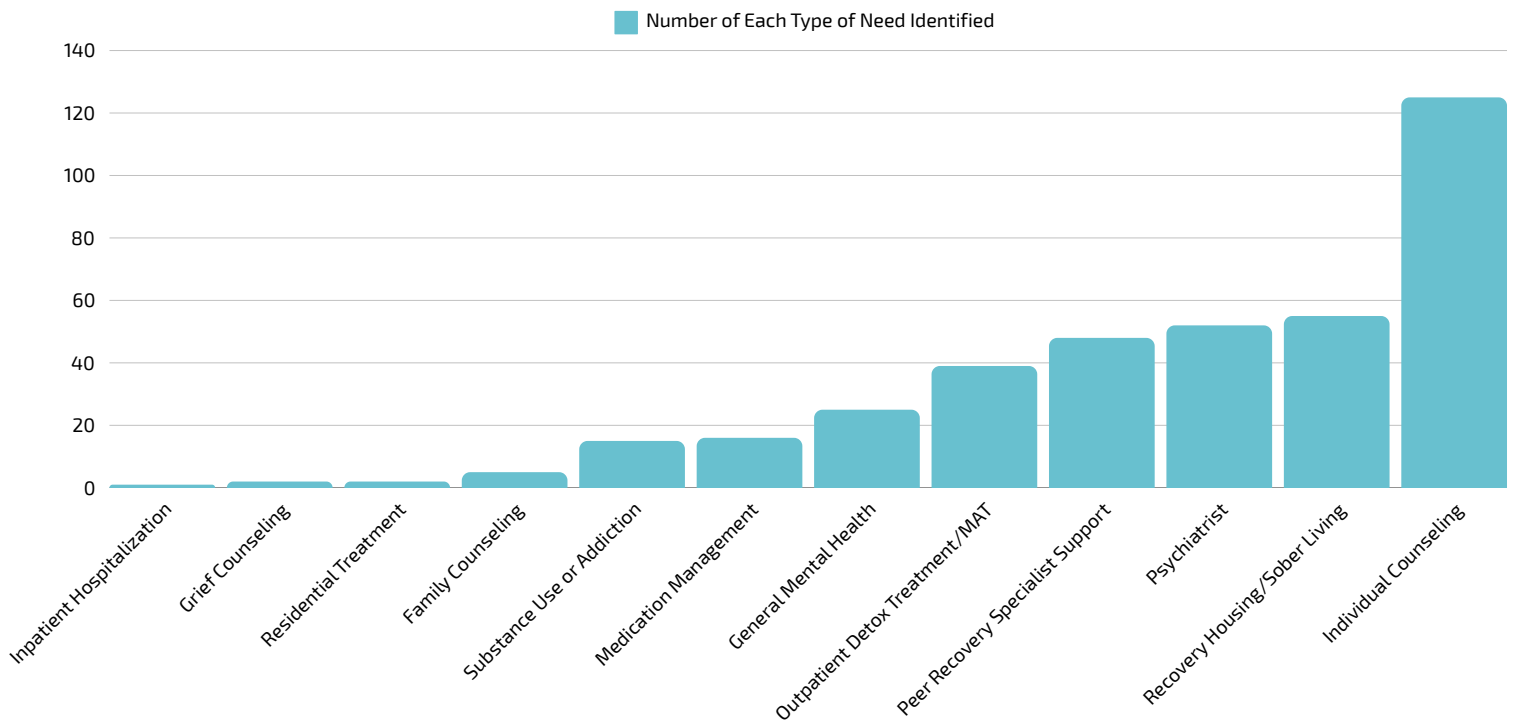
Individuals



Needs



Note: Many clients present to Flagler Cares with more than one need.



### LINC Referrals

21 Received from Partner Organizations

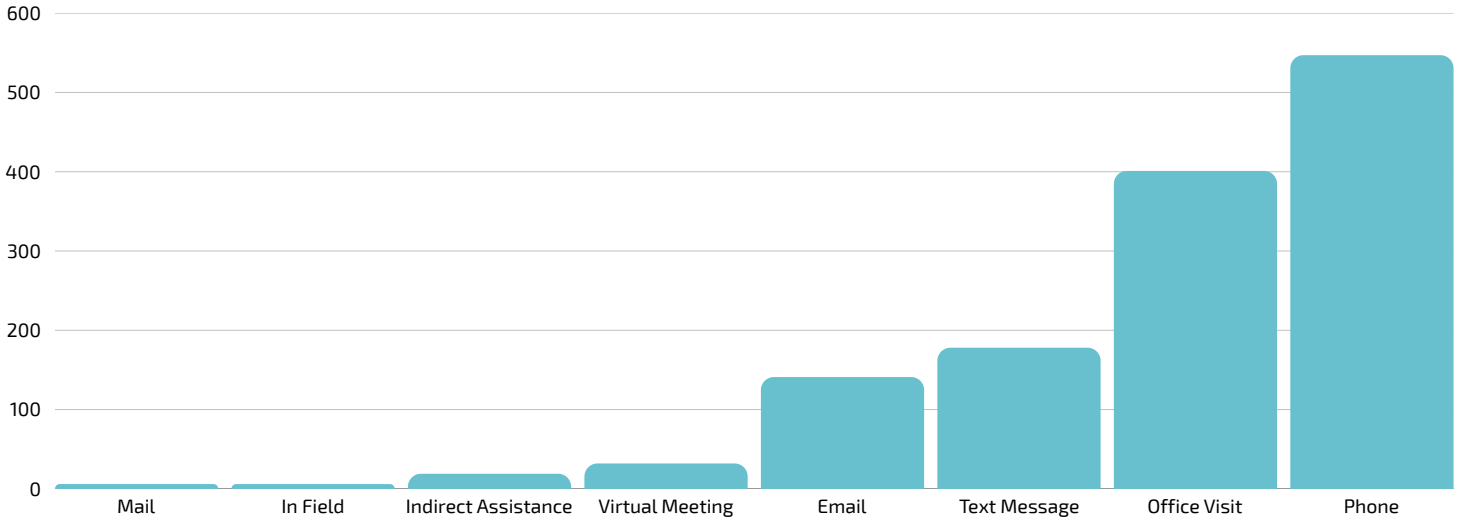
# Behavioral Health Enrollments

162 New Individuals Assisted with a BH Need

96 Individuals Active on December 31\*

\*This number includes new enrollments beginning during the timeframe of this report and older enrollments which are still active.

## Encounter Data



## Average Number of Encounters per Client

July: 2.38

August: 2.50

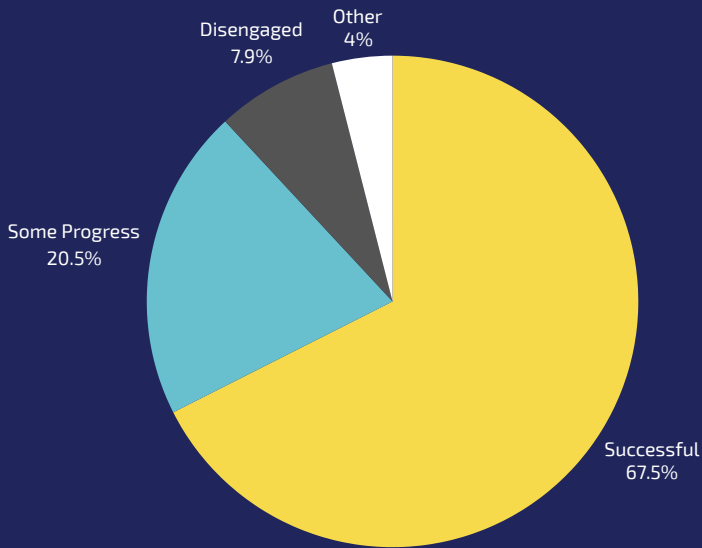
September: 2.68

October: 2.53

November: 2.35

December: 2.18

## Unenrollment Outcomes



## Direct Client Assistance

